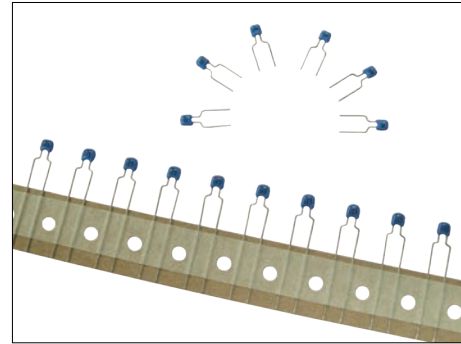


Type: SSM

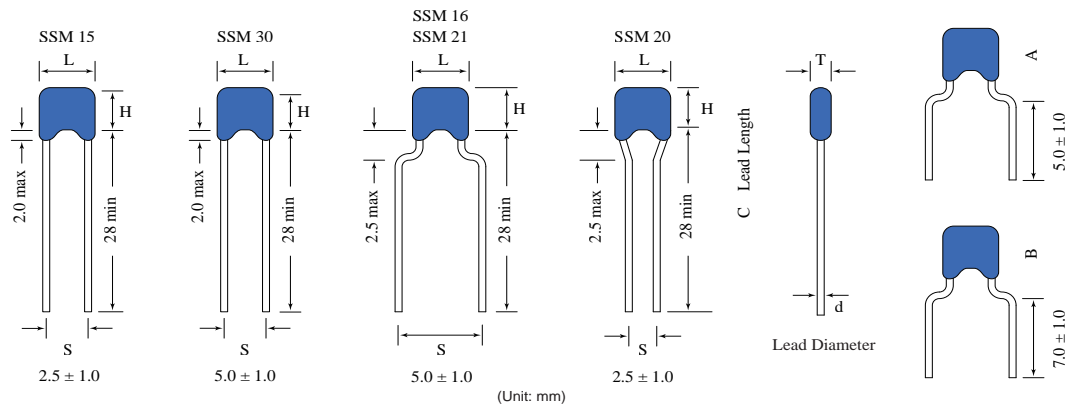
Radial-Leaded 徑向導線

Features 特性

- Flame retardant epoxy.
- 6.3V, 10V, 16V, 25V, 50V, 100V ~ 3KVDC.
- NPO, X5R, X7R, Y5V temperature coefficients.
- High capacitance in miniature size, high performance, and high reliability.
- Radial type lead material: tinned copper wire or tinned copper clad steel wire (CP wire).
- 耐燃等級環氧樹脂塗裝。
- 6.3V, 10V, 16V, 25V, 50V, 100V ~ 3KVDC 額定電壓。
- NPO, X5R, X7R, Y5V 溫度係數。
- 容量大、體積小性能優及極佳的信賴性。
- 徑向導線：鍍錫銅線或鍍錫銅包鋼線 (CP 線)。

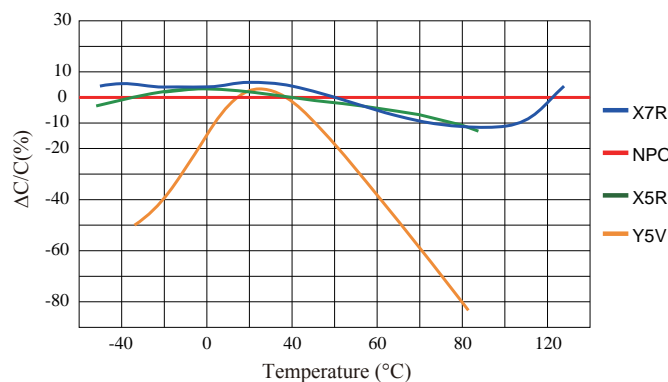


Dimensions 尺寸



Style	Dimensions (Unit: mm)					Capacitance Range			
	L Max.	H Max.	T Max.	s	d	WVDC	NPO	X7R/X5R	Y5V
SSM 15	5.0	3.8	2.5	2.5	0.5	6.3V ~ 3000V	1pF ~ 0.01μF	150pF ~ 1.0μF	1000pF ~ 10μF
SSM 16	5.0	3.8	2.5	5.0	0.5	6.3V ~ 3000V	1pF ~ 0.01μF	150pF ~ 1.0μF	1000pF ~ 10μF
SSM 20	5.5	5.0	3.5	2.5	0.5	6.3V ~ 3000V	1pF ~ 0.015μF	150pF ~ 22μF	1000pF ~ 22μF
SSM 21	5.5	5.0	3.5	5.0	0.5	6.3V ~ 3000V	1pF ~ 0.015μF	150pF ~ 22μF	1000pF ~ 22μF
SSM 30	7.5	7.5	4.0	5.0	0.5	6.3V ~ 3000V	10pF ~ 0.033μF	1000pF ~ 22μF	0.01μF ~ 100μF

Typical Characteristics 曲線圖

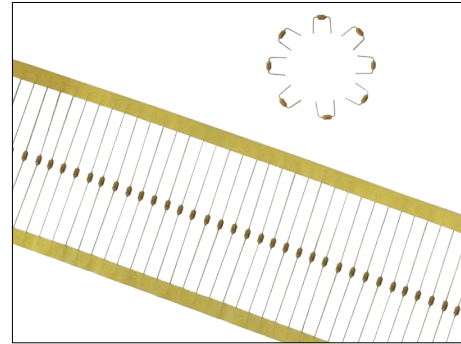


Type: SSM

Axial-Leaded 軸向導線

Features 特性

- Flame retardant epoxy.
- 6.3V, 10V, 16V, 25V, 50V ~ 3KVDC.
- NPO, X7R, X5R, Y5V temperature coefficients.
- Axial type lead material: tinned copper wire or tinned copper clad steel wire (CP wire).
- 耐燃等級環氧樹脂塗裝。
- 6.3V, 10V, 16V, 25V, 50V ~ 3KVDC 額定電壓。
- NPO, X7R, X5R, Y5V溫度係數。
- 軸向導線：鍍錫銅線或鍍錫銅包鋼線 (CP 線)。



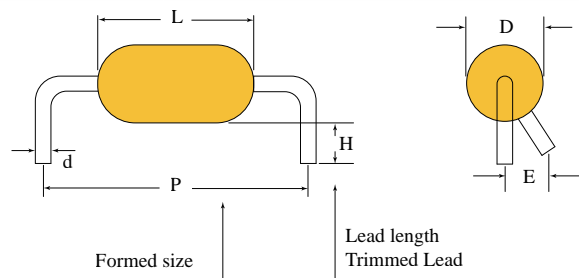
Specifications 規格

Dielectric	NPO	X5R	X7R	Y5V
Rated Voltage 額定電壓	6.3VDC ~ 3000VDC			
Capacitance Range 電容量範圍	1pF to 22μF			
Capacitance Tolerance 容量誤差	D = ±0.5pF (10pF & above) J = ±5% (10pF & above)	K = ±10% M = ±20% Z = +80% ~ -20%		M = ±20% Z = +80% ~ -20%
Operating Temperature 操作溫度	-55°C ~ +125°C	-55°C ~ +85°C	-55°C ~ +125°C	- 25°C ~ +85°C
Capacitance Change 電容量變化	0 ± 30ppm/°C	±15%		+30% ~ -80%
Capacitance Test: @25°C or referred to +25°C 電容量測試	1.0 ± 0.2Vrms, 1kHz ± 10% 1.0 ± 0.2Vrms, 1MHz ± 10% for capacitance ≤ 1000pF	1.0 ± 0.2 Vrms, 1kHz ± 10%		
Q/Dissipation Factor 損耗因數	C < 30pF: Q ≥ 400 + 20C C ≥ 30pF: Q ≥ 1000 0.1% Max.	≥ 50V: 2.5% ~ 3% 25V: ≤ 3.5% ~ 10% 16V: ≤ 3.5% ~ 10% 10V: ≤ 5.0% ~ 10% 6.3V: ≤ 10% ~ 15%		≥ 50V: 5% ~ 7% 25V: ≤ 5% ~ 9% 16V: ≤ 7% ~ 12.5% 10V: ≤ 12.5% 6.3V: ≤ 20%
Insulation Resistance 絕緣阻抗	10GΩ or 500MΩ.μF, whichever is less than 25°C			
Dielectric Strength 耐電壓	≤ 50V 51V ~ 100V 200V ~ 300V 500V ~ 990V 1000V ~ 3000V	250% of rated voltage for 5 seconds less than 50mA 250% of rated voltage for 5 seconds less than 10mA 200% of rated voltage for 5 seconds less than 10mA 150% of rated voltage for 5 seconds less than 10mA 120% of rated voltage for 5 seconds less than 10mA		

Dimensions 尺寸

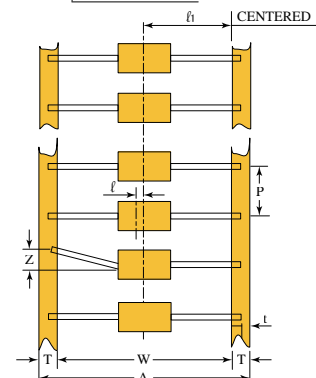
Axial Formed 導線彎角成型尺寸

Style	Dimensions (Unit: mm)					
	L Max.	D Max.	P ± 0.5	H ± 1.0	d	E
SSM10	A	3.8	2.6	5.0	0.5	2
	B			7.62		
	C			10.0		
SSM22	D	6.0		10.0		



Axial Taped 帶裝尺寸

Style	Dimensions (Unit: mm)							
	A	W	P	ℓ Max.	Z Max.	t	T	ℓ1
SSM10	TC	39 ± 1	26 ⁺¹ ₋₀	5 ± 0.5	0.5	1	2 Max.	6 ± 1
SSM22	TB	64 ± 1	52 ± 1	5 ± 0.5	0.5	1		



Type: SSC

SMD Chip Capacitors 貼片電容器

Features 特性

- Miniature size and light weight.
- High capacitance, performance, and reliability.
- 體積小、重量輕。
- 容量大、性能優及極佳的信賴性。



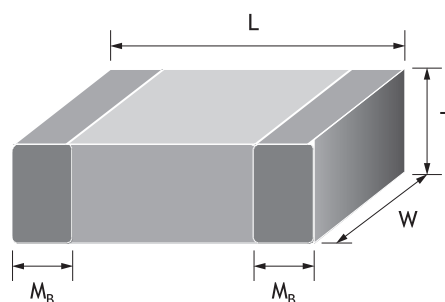
Applications 用途

- Consumer and industrial electronic equipment.
- Bypass timing.
- General purpose.
- 民生用及工業用電子機器。
- 旁路應用。
- 一般用途。

Specifications 規格

Dielectric	NPO	X5R	X7R	Y5V
Rated Voltage 額定電壓	6.3VDC ~ 3000VDC			
Capacitance Range 電容量範圍	1pF to 100μF			
Capacitance Tolerance 容量誤差 Note: B, C, D: Cap. <10pF F, G, J, K, M, Z: Cap. ≥ 10pF	B = ±0.1pF C = ±0.25pF D = ±0.5pF F = ±1% G = ±2% J = ±5%	J = ±5% K = ±10% M = ±20% Z = +80% ~ -20%		M = ±20% Z = +80% ~ -20%
Operating Temperature 操作溫度	-55°C ~ +125°C	-55°C ~ +85°C	-55°C ~ +125°C	-25°C ~ +85°C
Capacitance Change 電容量變化	0 ± 30ppm/°C	±15%		+30% ~ -80%
Capacitance Test: @25°C or referred to +25°C 電容量測試	1.0 ± 0.2Vrms, 1kHz ± 10% 1.0 ± 0.2Vrms, 1MHz ± 10% for capacitance ≤ 1000pF	1.0 ± 0.2 Vrms, 1kHz ± 10%		
Q/Dissipation Factor 損耗因數	C < 30pF: Q ≥ 400 + 20C C ≥ 30pF: Q ≥ 1000 0.1% Max.	≥ 50V: 2.5% ~ 3%. 25V: ≤ 3.5% ~ 10% 16V: ≤ 3.5% ~ 10% 10V: ≤ 5.0% ~ 10% 6.3V: ≤ 10% ~ 15%		≥ 50V: 5% ~ 7% 25V: ≤ 5% ~ 9% 16V: ≤ 7% ~ 12.5% 10V: ≤ 12.5% 6.3V: ≤ 20%
Insulation Resistance 絕緣阻抗	10GΩ or 500MΩ.μF, whichever is less than 25°C			
Dielectric Strength 耐電壓	≤ 50V 51V ~ 100V 200V ~ 300V 500V ~ 990V 1000V ~ 3000V	250% of rated voltage for 5 seconds less than 50mA 250% of rated voltage for 5 seconds less than 10mA 200% of rated voltage for 5 seconds less than 10mA 150% of rated voltage for 5 seconds less than 10mA 120% of rated voltage for 5 seconds less than 10mA		

Dimensions 尺寸



Dimensions Inch (mm)	0402 (1005)	0603 (1608)	0805 (2012)	1206 (3216)	1210 (3225)	1808 (4520)	1812 (4532)
L (mm)	1.00±0.05	1.60+0.15/-0.10	2.00±0.20	3.20±0.20	3.20±0.40	4.50±0.40	4.50±0.40
W (mm)	0.50±0.05	0.80+0.15/-0.10	1.25±0.20	1.60±0.20	2.50±0.30	2.03±0.25	3.20±0.30
T (mm)	0.50±0.05	0.80+0.15/-0.10	0.60~1.25±0.20	0.80~1.60+0.30/-0.10	0.95~2.5±0.30	1.25~2.0±0.20	1.25~2.50±0.30
MB (mm)	0.25+0.05/-0.10	0.40±0.15	0.50±0.20	0.60±0.20	0.75±0.25	0.75±0.25	0.75±0.25

Capacitance Range 電容量範圍

Size		NPO			X5R			X7R				Y5V			
		10/25V	50V	100V	6.3V	10V	16V	10/16V	25V	50V	100V	10V	16/25V	50V	100V
0402	Min.	0.5pF	0.5pF	0.5pF	0.22μF	0.056μF	0.027μF	0.012μF	5600pF	100pF	---	0.15μF	0.047μF	0.01μF	---
	Max.	470pF	220pF	150pF	1.0μF	0.1μF	0.1μF	0.1μF	0.022μF	0.01μF	---	0.47μF	0.1μF	0.033μF	---
0603	Min.	0.5pF	0.5pF	0.5pF	0.68μF	0.33μF	0.33μF	0.082μF	0.033μF	100pF	100pF	0.68μF	0.22μF	0.01μF	---
	Max.	3300pF	1000pF	560pF	2.2μF	1.0μF	1.0μF	0.22μF	0.1μF	0.1μF	0.01μF	1μF	1μF	0.15μF	---
0805	Min.	0.5pF	0.5pF	0.5pF	2.2μF	2.2μF	2.2μF	0.39μF	0.082μF	100pF	100pF	---	0.47μF	0.01μF	0.01μF
	Max.	0.012μF	4700pF	3900pF	10μF	4.7μF	4.7μF	1μF	1μF	0.22μF	0.1μF	---	1μF	0.47μF	0.15μF
1206	Min.	1.5pF	1.5pF	1.5pF	4.7μF	2.2μF	1.5μF	0.27μF	150pF	150pF	150pF	---	0.01μF	0.01μF	0.01μF
	Max.	0.039μF	0.015μF	8200pF	22μF	10μF	4.7μF	4.7μF	1μF	1μF	0.22μF	---	1μF	1μF	0.22μF
1210	Min.	22pF	22pF	10pF	---	2.2μF	2.2μF	---	0.33μF	1000pF	1000pF	---	---	0.1μF	0.01μF
	Max.	0.015μF	0.015μF	0.015μF	---	10μF	10μF	---	1μF	1μF	0.56μF	---	---	1μF	0.33μF
1812	Min.	---	1000pF	10pF	---	---	---	---	0.68μF	1000pF	1000pF	---	10μF	1μF	---
	Max.	---	0.033μF	0.033μF	---	---	---	---	1μF	1μF	1μF	---	47μF	6.8μF	---

Capacitance Range (High Voltage) 電容量範圍 (高壓)

Size		NPO						X7R						Y5V	
		200V	250V	500V	1000V	2000V	3000V	200V	250V	500V	1000V	2000V	3000V	200V	250V
0603	Min.	22pF	22pF	---	---	---	---	---	---	---	---	---	---	---	---
	Max.	100pF	100pF	---	---	---	---	---	---	---	---	---	---	---	---
0805	Min.	0.5pF	0.5pF	0.5pF	---	---	---	100pF	100pF	100pF	---	---	---	0.01μF	0.01μF
	Max.	820pF	390pF	390pF	---	---	---	0.022μF	0.022μF	2700pF	---	---	---	0.068μF	0.068μF
1206	Min.	1.5pF	1.5pF	1.5pF	1.5pF	1.5pF	---	150pF	150pF	150pF	150pF	150pF	150pF	0.01μF	0.01μF
	Max.	2200pF	1000pF	1000pF	470pF	220pF	---	0.1μF	0.1μF	0.033μF	4700pF	1500pF	1000pF	0.15μF	0.15μF
1210	Min.	10pF	10pF	10pF	10pF	10pF	---	1000pF	1000pF	1000pF	1000pF	---	---	0.01μF	0.01μF
	Max.	3900pF	2700pF	1800pF	470pF	220pF	---	0.47μF	0.47μF	0.056μF	0.01μF	---	---	0.15μF	0.15μF
1808	Min.	---	---	---	2.2pF	2.2pF	2.2pF	---	---	---	150pF	150pF	150pF	---	---
	Max.	---	---	---	1000pF	680pF	270pF	---	---	---	0.01μF	2200pF	1000pF	---	---
1812	Min.	10pF	10pF	10pF	10pF	10pF	10pF	1000pF	1000pF	1000pF	270pF	270pF	680pF	0.01μF	0.01μF
	Max.	6800pF	3300pF	3300pF	1500pF	1000pF	470pF	0.47μF	0.47μF	0.1μF	0.015μF	4700pF	820pF	0.68μF	0.68μF